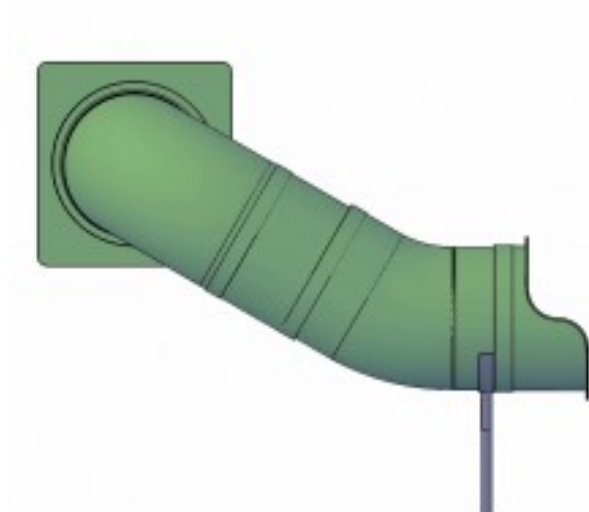


Tube Slide 30 inch diameter 48 inch deck height 90 Degree Left \$5,351.00

<https://www.dunriteplaygrounds.com/store2/2703-40008134XX-Tube-Slide-30-48-Degree-Left>

Product Image



Description

30" diameter Tube Slide for 4 foot deck 90 Degree Right

Are you looking for an 8 ft tube slide or 8 foot slide (long) for a 4' deck height, or a slide for an 8' HIGH deck (around 16' long)?

PRICING NOTE: Many slides have a "\$0.00" price displayed on the product page. This isn't to annoy you or make things intentionally difficult. With some slides there are multiple options and configuration choices available, not to mention custom solutions. Creating an account on our site does not make the price appear. Please call or email us with details about your project. We will work with you to find the correct solution and best pricing.

FREIGHT NOTE: Slides are big and can become costly when trying to ship. With only a few exceptions, slides must ship by common carrier (freight truck). Our online estimator will not provide the correct price for these items. Freight pricing is a complex formula including factors such as: weight, dimensions, your location or your type of location. To further complicate the shipment, most slides need to be placed on a skid or crate for shipment. This added weight means it probably wouldn't be more to ship two or three at the same time as one slide. Be sure to consolidate all of your purchases for the project into one order. Freight to a commercial

location is usually less expensive. A location qualifies for commercial pricing is the address of delivery has a freight dock. All other locations are classified as residential. While a church, school or retail shop isn't a residential venue, it is usually classified as such by the freight company. The delivery address for a shipment must be attended. Freight carriers charge a surcharge or add on fee for delivery notification, appointment or scheduled delivery is an added fee. Many times with large or heavy freight, a liftgate is a useful aid to get material from the truck to the ground. In the case of slides, a liftgate can not be used as they are not deep and wide enough to allow the slide to fit on them. Unloading your slide is your responsibility and may take one or more persons to do the job. Please call or email your project information and we will ensure you have the correct item, and work with you to make sure that you receive the best value and most appropriate solution! We don't mark up the carrier provided pricing, that isn't our business. DunRite Playgrounds provides both plastic slides and metal slides. A plastic slide may be used indoors or out, and is often popular for water, pool or lake. A metal slide is a durable and long lasting slide solution! Let us know how we may help you with the correct playground slides.

(tag_tubelrturn)(tag_30tubedia)(tag_tube48deck)(tag304890)(tag_slide48dh)

What do you remember from your childhood? Do you remember the play ground slides? Play slides are on the top of the list for kid choice play, right up there with a swing set. Did you have a slide for backyard play? Backyard playground slides or backyard swings recall some of our fondest memories of growing up. The playground slide and our school friends were truly "the good old days."

If you are looking for a stainless steel tube slide or a slide manufacturer, you may be shocked with the price. Searching for a stainless steel slide for sale will probably find drawer tracks for your kitchen, when you may really want to look for an aluminum slide instead. It really isn't practical to build a spiral slide with a tube, the cost is outrageous. A straight slide could be made as a stainless steel tube slide, but consider instead our TU Series aluminum tube slides for a more reasonable price. This means your metal tube slide with probably be straight. Stainless steel slides are more expensive than aluminum. An aluminum playground slide is a durable and long lasting addition to your playground! A tubular slide is good for containing the passenger, but usually costs more than an open bedway slide. With a long playground slide from a high deck height elevation an enclosed tube would offer better protection from spills overboard. We also have tube slide (or some call it a sliding tube) parts that may be used to for a DIY Tube Slide, build a playground tunnel, a playground tube, crawl tube or crawl tunnels. A commercial tube slide may be built as a plastic slide or metal slide, some commercial locations however, may not allow a plastic slide due to fire codes. Check with your local building officials for specific restrictions on a slide in a business, office or commercial facility. Slides tubes (also called tunnel slides) also have other uses such as going through an attic space, or through a wall to another room.

Looking for a metal spiral slide for sale often results in a price tag of several hundred thousand dollars! Consider our patented and propriety LMA and FSS Series slides! Searching for spiral slides for playgrounds can be a daunting task, with more options than you want. A spiral playground slide (sometimes called a twist slide or twisted slide) is often the crowning jewel

and the big kids end a play structure at the local school or park. If you don't have room for a complete playground system, freestanding slides may be worth consideration. Don't try to find a spiral slide kit, this really isn't a do-it-yourself product. Playground slide dimensions contain lengthy and complicated factors to make safe and fun play. An affordable spiral tube slide is most likely going to be a plastic slide. A stainless slide isn't outrageous in price if it is a flat bedway, straight slide. Turns and curves are when a stainless steel slide becomes more expensive. The slide chute may create a curvy slide with slight or gentle turns like a veer right slide or veer left slide. Angles and turns may create a 90 degree tube slide, such as a left turn slide or right turn slide.

Keeping the price down may lead you to search for used metal slides for sale. Used and sale in the same sentence with slides are probably not a good idea when considering playground equipment. Someone getting rid of a slide should make you wonder if something is wrong with it! Watch out for an ad for a "used playground slide." A commercial slide may cost more than a residential slide due to thickness, dimensions and durability factors. Commercial slides are usually needed for any place other than your backyard treehouse slide. Residential playground equipment is typically manufactured with different materials and to different standards or specifications. A slide for playground use must meet higher standards and more restrictive guidelines. Stainless steel playground slides may also be used off of the playground, so don't let a name confuse your search. This means a metal kids slide may also be used for adults, as an adult slide.

Trying to find the right playground slide for sale could be a tough task. Let us simplify your slide search, how high is the deck? Start there! Custom playground slides don't cost more than a standard slide, we don't charge a premium to guide you. If you just want to know how to make a metal playground slide, you may end up missing some of the safety guidelines that an experienced manufacturer is familiar with. Don't forget playground shades. Playground shade will not only protect your children from direct sun, heat and harmful UV rays, but will also help protect your playground equipment.

Replacement for 50008134XX, Tube Slide 30 inch diameter 48 inch deck height 90 Degree Left

Replacement for 50608134, 30 Inch Diameter x 48 Inch Deck Height 90 Degree Left Tube Slide

Replacement for A480309XX, Slide-90 Degree Tube-48 inch deck height Left 3.5x46.5 inch system